

### CARATTERISTICHE SPECIFICATIONS

ATTACCHI PIPES in → out	Ø mm	CODICE CODE	KV m <sup>3</sup> /h	M.O.P.D. bar		DIMENSIONI/DIMENSIONS mm				PESO/WEIGHT Kg
				AC	DC	A	B	C	D	
G 1/8	1,5	6211	0.070	15	10	35	84,5	47	69	0.250
<b>G 1/8</b>	2,0	6211	0.120	10	7	35	84,5	47	69	0.250
G 1/8	2,8	6211	0.210	5	3	35	84,5	47	69	0.250
G 1/4	1,5	6212	0.070	15	10	35	84,5	47	69	0.230
<b>G 1/4</b>	2,0	6212	0.120	10	7	35	84,5	47	69	0.230
G 1/4	2,8	6212	0.210	5	3	35	84,5	47	69	0.230
FLANGIA / FLANGE	1,5	6270	0.065	15	10	33	67	47	-	0.220
FLANGIA / FLANGE	2,0	6270	0.110	10	7	33	67	47	-	0.220

Diametro sede 3<sup>a</sup> via - Seat Diameter 3<sup>rd</sup> way - ø 1,9

### CARATTERISTICHE ELETTRICHE ELECTRICAL INFORMATION

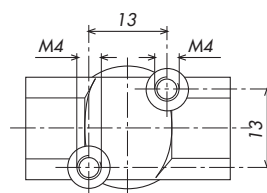
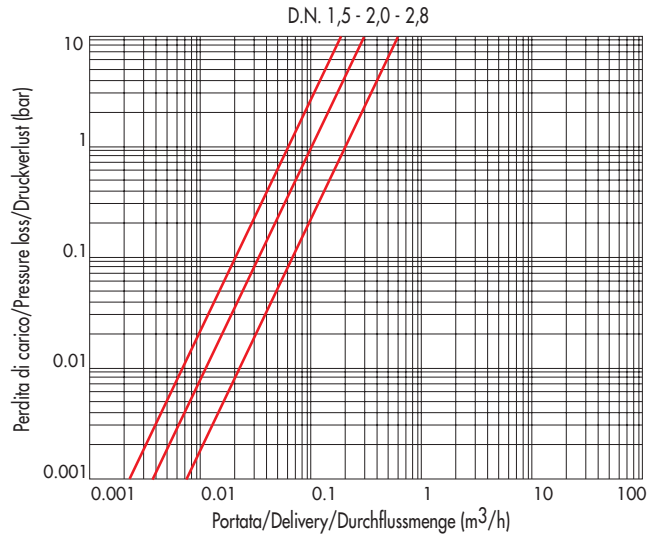
V~	12	24	48	110	230	400	50	60	Hz	POTENZA/POWER	
										NOMINALE HOLDING	SPUNTO IN RUSH
V~	12	24	48	110	230	400	50	60	Hz	12VA	23VA
V=	12	24	48	110						16W	

Per dettagli costruttivi sulle bobine vedi capitolo "INFORMAZIONI DI PROGETTO"  
For construction details of the coils see chapter "PROJECT INFORMATION"  
Ausführliche Daten über die Ventilsolenen finden Sie unter Abschnitt "TECHNISCHE  
INFORMATIONEN"

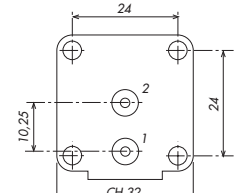
### MAX TEMPERATURA MAX TEMPERATURE

FLUIDI/FLUIDS				AMBIENTE/AMBIENT
NBR	EPDM	FPM	HNBR	80°C
90°C	150°C	150°C	110°C	

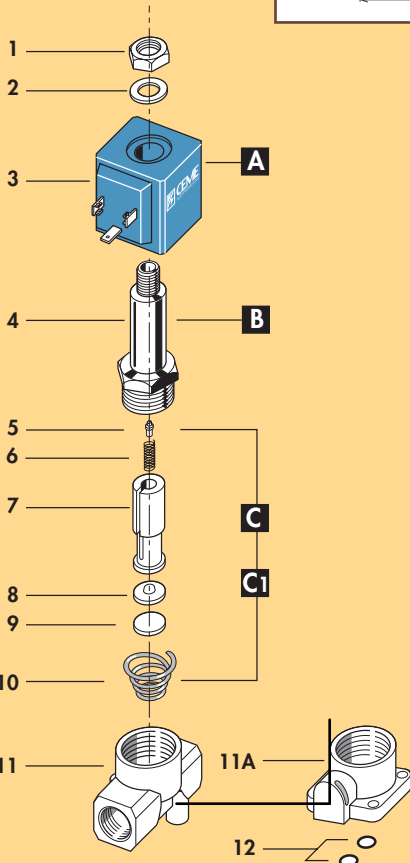
### DIAGRAMMA PERDITA DI CARICO PRESSURE LOSS DIAGRAM



6211-12



6270



1	Dado	Lock nut	Mutter
2	Rondella	Washer	Beilagscheibe
3	Bobina	Coil	Magnetspule
4	Cannotto	Tube guide	Plungerrohr
5	Gommino di tenuta	Rubber seal	Dichtung
6	Molla	Spring	Feder
7	Nucleo mobile	Plunger	Plunger
8	Piattello	Support	Scheibe
9	Pastiglia	Seal	Dichtung
10	Molla	Spring	Feder
11	Corpo	Valve body base	Grundkörper
12	O-ring	O-ring	O-ring

RICAMBI	SPARE PARTS	ERSATZTEILE
<b>A</b> Bobina	Coil	Magnetspule
<b>B</b> Cannotto	Tube guide	Plungerrohr
<b>C</b> Nucleo mobile (C.A.)	Plunger (A.C.)	Plunger (A.C.)
<b>C1</b> Nucleo mobile (C.C.)	Plunger (D.C.)	Plunger (D.C.)

**ELETTROVALVOLA AZIONE DIRETTA 3/2 VIE N.C.**  
**SOLENOID VALVE DIRECT ACTING 3/2 WAY N.C.**  
**DIREKTGESTEUERTES MAGNETVENTIL 3/2 WEGE S.G.**



**I CARATTERISTICHE GENERALI**

<b>PRESSIONE MINIMA DI FUNZIONAMENTO</b>	0 bar
<b>PARTI A CONTATTO CON IL FLUIDO</b>	
<b>TENUTA</b>	EPDM - NBR - FPM - HNBR
<b>CORPO</b>	OTTONE CON SEDE DI TENUTA INOX
<b>TUBO GUIDA INOX</b>	- Tenuta metallica con il corpo per tenute sicure anche ad alte temperature di impiego. - Migliore resistenza alla corrosione.
<b>ORGANI INTERNI</b>	ACCIAIO INOX
<b>FLUIDI</b>	ACQUA - ARIA - VAPORE - GAS - OLII LEGGERI - GASOLIO
<b>VERSIONE STANDARD</b>	N.C. con ingresso da attacco n°2
<b>VALVOLA ISPEZIONABILE</b>	
<b>POSIZIONE DI MONTAGGIO</b>	Qualsiasi.
<b>TEMPERATURA AMBIENTE</b>	80°C, in D.C. per temperature superiori a 40°C, le performance (M.O.P.D.) potrebbero diminuire.
<b>ESECUZIONI SPECIALI</b>	NICHELATURA sul corpo LA VALVOLA PUÒ ESSERE USATA OLTRE ALLA VERSIONE STANDARD, RIPORTATA A CATALOGO NORMALMENTE CHIUSA (INGRESSO DA 2), ANCHE COME: - DEVIATRICE (INGRESSO DA 1) - UNIVERSALE
<b>ACCESSORI</b>	CONNETTORE TRIPOLARE UNI ISO 4400 (DIN 43650A) IP65 BASETTE COMPONENTI DI DISTRIBUZIONE-MANIFOLDS (6270)

**UK GENERAL FEATURES**

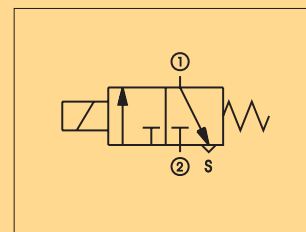
<b>MINIMUM WORKING PRESSURE</b>	0 bar
<b>PARTS IN CONTACT WITH THE FLUID</b>	
<b>SEALING</b>	EPDM - NBR - FPM - HNBR
<b>BODY</b>	BRASS WITH SEALING SEAT IN STAINLESS STEEL
<b>STAINLESS STEEL TUBE GUIDE</b>	- Metallic sealing with the body for safety sealing also for high temperature applications. - Improved corrosion resistance.
<b>INTERNAL PARTS</b>	STAINLESS STEEL
<b>FLUIDS</b>	WATER - AIR - STEAM - GAS - LIGHT OILS - DIESEL OIL
<b>STANDARD VERSION</b>	N.C. with inlet from port 2
<b>SERVICEABLE VALVE</b>	
<b>MOUNTING POSITION</b>	Any.
<b>AMBIENT TEMPERATURE</b>	80°C, in D.C. for temperatures higher than 40°C, the performances (M.O.P.D.) could decrease.
<b>SPECIAL EXECUTIONS</b>	NICKEL-PLATED VALVE BODY - IN ADDITION TO THE STANDARD VERSION, SHOWN IN THE CATALOGUE (NORMALLY CLOSED INLET FROM PORT 2), THE VALVE CAN ALSO BE USED AS A DIVERTER (INLET FROM PORT 1) OR UNIVERSAL.
<b>ACCESSORIES</b>	THREE POLE PLUG CONNECTOR UNI ISO 4400 (DIN 43650A) IP65 FLANGED BASE WHICH ALLOWS MANIFOLD MOUNTING (6270)

**D ALLGEMEINE MERKMALE**

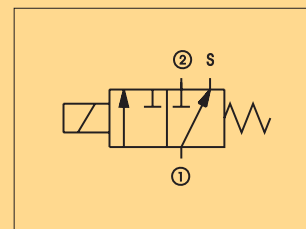
<b>MINIMALER ARBEITSDRUCK</b>	0 bar
<b>MEDIUMS BERUEHRTE TEILE</b>	
<b>DICHTUNG</b>	EPDM - NBR - FPM - HNBR
<b>KOERPER</b>	MESSING MIT VENTILSITZ AUS EDELSTAHL
<b>PLUNGERROHR AUS EDELSTAHL</b>	- Metallische Dichtung fuer einen sicheren Einsatz auch bei hohen Medien Temperaturen. - Bessere Korrosionsbestaendigkeit.
<b>INNERE ELEMENTE</b>	EDELSTAHL
<b>MEDIEN</b>	WASSER - LUFT - DAMPF - GAS - LEICHTE OELE - DIESEL OEL
<b>STANDARD AUSFUEHRUNG</b>	S.G. Eingang 2
<b>VENTIL WARTUNGSFREUNDLICH</b>	
<b>MONTAGEPOSITION</b>	Keine Einschränkungen.
<b>UMGEBUNGSTEMPERATUR</b>	80°C, im D.C. -Betrieb koennen Temperaturen ueber 40°C, die Schaltkraefte (M.O.P.D.) des Ventils beeintraechtigen.
<b>SONDERAUSFUEHRUNGEN</b>	VERNICKELTER VENTILKOERPER. ANSCHLUSSMOEGlichkeiten: -DIESER VENTILTYP ERMOEGLICHT EINE FREIE ANSCHLUSSWAHL: IN RUHESTELLUNG (S.G.) BEFINDET SICH EINGANG 1 ZU 3 IN VERBINDUNG
<b>ZUBEHOER</b>	DREIPOLIGER STECKER UNI ISO 4400 (DIN 43650A) IP65 ZUSAMMENSETZBARE MONTAGEPLATTFORMEN (FLANSCH) FUEHR MEHRFACHVERTEILUNG (6270)



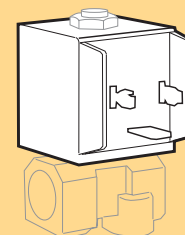
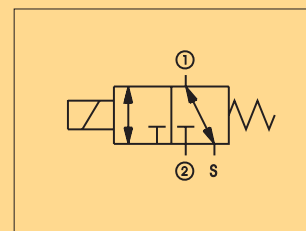
STANDARD



DEVIATRICE - DIVERTER



UNIVERSALE - UNIVERSAL



**BOBINA TIPO B6**  
**COIL TYPE B6**  
**SPULE TYP B6**