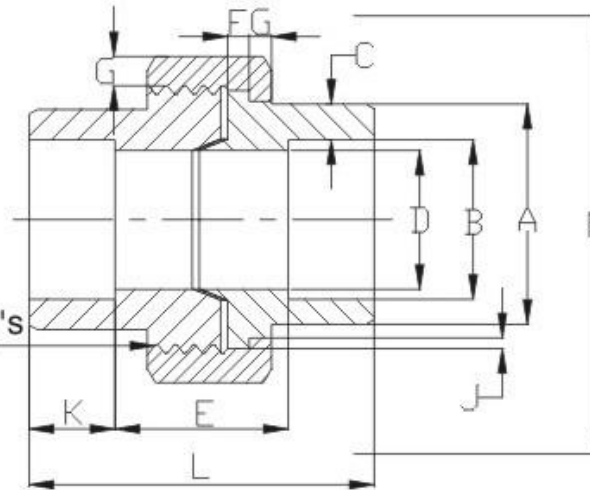


ΑΝΟΞΕΙΔΩΤΑ ΠΑΚΟΡ 3000 lb ΚΟΛΛΗΤΑ

1084xxA 1/1



H-Thrd's Minimum 4 Full Thrd's
Engagement Class 2A/2B Fit
ANSI B1.1

NPS	A (Min)	B	C(Min)	D	E	F(Min)	G(Min)	H(Max)	J(Min)	K(Min)	L	N
1/8"	21.8	10.92 10.67	3.17	6.83 6.43	22.4 19	3.17	3.17	16	1.24	9.6	41.4	49
1/4"	21.8	14.22 13.97	3.3	9.85 9.45	22.4 19	3.17	3.17	16	1.24	9.6	41.4	49
3/8"	25.9	17.78 17.53	3.48	13.92 13.51	26.9 20.6	3.43	3.43	14	1.37	9.6	46	55
1/2"	31.2	21.84 21.59	4.06	17.47 17.07	26.9 20.6	3.68	3.68	14	1.5	9.6	49	57
3/4"	37.1	27.18 26.92	4.27	21.79 21.39	31.8 25.4	4.06	4.06	11	1.68	12.7	56.9	67
1"	45.5	34.04 33.78	4.95	28.14 27.74	34.3 26.2	4.57	4.44	11	1.85	12.7	62	79
1-1/4"	54.9	42.67 42.42	5.28	35.76 35.36	40.6 32.5	5.33	5.21	11	2.13	12.7	71.1	94
1-1/2"	61.5	48.77 48.51	5.54	41.61 41.2	42.2 34	5.84	5.59	10	2.31	12.7	76.5	111
2"	75.2	61.47 61.21	6.05	52.53 52.12	45.5 37.3	6.6	6.35	10	2.69	15.8	86.1	132
2-1/2"	91.7	74.17 73.66	7.65	64.72 64.31	61.7 52.1	7.49	7.11	8	3.07	15.8	102.4	148
3"	109.2	90.17 89.66	8.31	77.67 77.27	63.8 53.6	8.25	8	8	3.53	15.8	109	175

unit:mm



CHRYSSAFIDIS

CHRYSSAFIDIS S.A.
ATHENS: 3 AGRINIΟΥ STR, TAVROS - (+30) 210 4836315-20 /
THESSALONIKI: DA12A STR, OT32, BIPE SINDOU - (+30) 2310 754681-4 /
www.chryssafidis.com / sales@chryssafidis.gr

CHECK BY: DRAWING BY: DATE: SPECIFICATION: **UNIONS 3000LB SOCKET**

Julie

AUG.17.2004

MATERIAL: **FORGED**

PROCESS/Nr.

UNIT / SCALE: **UNIT**

△			
△			
△			
Revise	Description	Date	Approve
DRAWING NO. HF24		-04	